

# IP Paging

Everything you need to set up a paging network

- *IP Paging Server*
- *Local and cloud paging system*
- *IP Speaker and Horn Systems*
- *IP PCB Systems for Integrators*



**ARGENTINA**

Tel: +54 11 5272 9500 · Chile 111 esq. Méjico  
Vicente López · Buenos Aires · B1603CMC

**ISRAEL**

Tel: +972 538 262 492

**MÉXICO**

Tel: +52 477 239 5261

**URUGUAY**

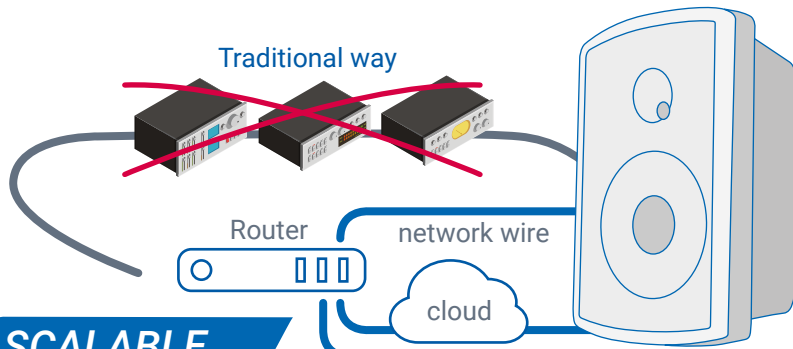
Tel: +598 99 200 210



<https://surix.net>



## Paging system designed to facilitate the implementation of audio message emission.

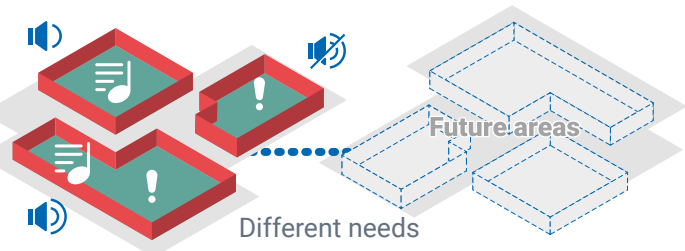


### ALL IN ONE

With a single data network you can integrate everything you need, such as a paging network or a functional music system widely used in shopping centers.

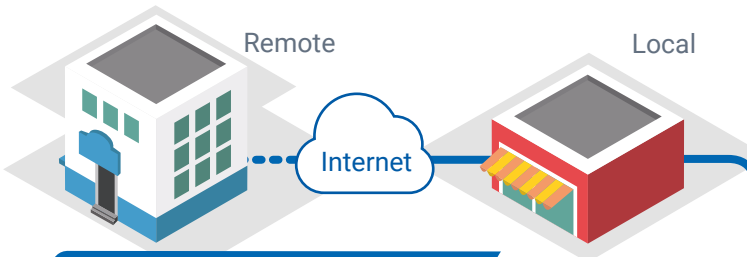
### SCALABLE

It is an easy and cost-effective solution to scale. Whether you want to expand areas or size of your network in a multi-user IP paging ecosystem. The system runs locally or in the cloud.



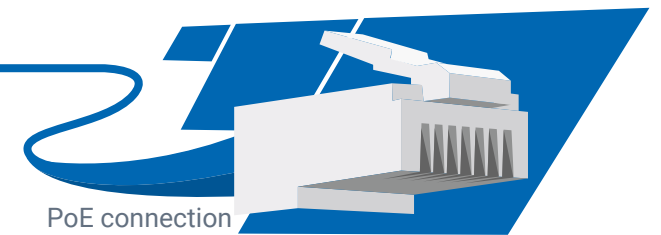
### FLEXIBLE

Play and schedule different content in different zones and easily change both zones and content at any time.



### EASY TO INSTALL

You only need a standard network for connectivity, power and communication, you can run the software on a local server, locally connected to remote areas through the internet or running the entire system from the cloud.



### EASY INTEGRATION

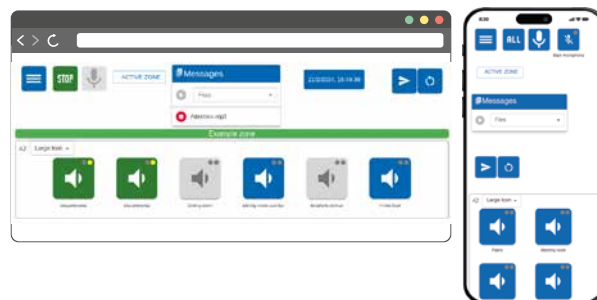
Connect your audio system to other systems and devices, such as your access control system and cameras. Automate messages using HTTP commands from your current software via API



### INTELLIGENT SYSTEM

Use HD audio players integrated into your server, attached applications or players, scheduled or event-driven announcements and/or HTTP commands, audio detection, health monitoring, etc. The system through API can be integrated into your company's software.





### Some of the general characteristics of the IP Audio/Conference system are:

- Connects (reuses) the same local data network
- The configuration of the zones is dynamic (through a graphical interface) and not through physical wiring.
- Zones can be configured for any number of speakers that can, in turn, overlap
- Allows connection with any data and audio device

### Características Generales de Software

#### Various audio sources:

- Streaming audio from the internet or other source on the network file(s) from an audio folder (audios are uploaded on the web administration page)
- Microphone input (you can have multiple microphones using USB adapters)
- Server line-in input
- Message recording, directly from the web administration page (compatible with all devices with a web browser)
- Recording messages from a telephone/extension
- Telephone communication (a distant speaker can be added to the conference by calling him on his landline or mobile phone)

#### Various audio destinations:

- SIP devices registered on the platform
- Audio playback zones (multicast groups)

#### Playback management:

##### Manual playback:

- Web interface to start/stop the audio source in each zone/speaker
- Start a message from a terminal registered on the server to the computer and play the audio of the message
- Start a message from a terminal registered on the server to the multicast group to play the audio of the message on all member devices of the speaker zone
- Make a call from/to a mobile phone to the server and play the audio on the computer or speaker area

##### Autoplay:

- Play audio based on events that occur in the system
- Execute audios based on HTTP commands from third-party systems
- Program in time zone (hour/day/month) which message/audio/source to play on a device or speaker area

### General hardware characteristics

- Intel Core I3 Haswell SOC Processor
- Intel HD Graphics 4400
- 2 x HDMI
- 4 x USB 3.0, 2 x USB 2.0, 1 x SATA 3
- 2 x Mini-PCIe, 1 x mSATA
- 2 x Realtek RTL8111E Gigabit LAN

### Processing System

**CPU:** Intel Core Haswell I3 SOC Processor  
Default 4005U Dual Core Processor, 1.7GHz, 3M Cache

**CPU TDP:** 15W

**Memory:** 1 x DDR3L SO-DIMM Socket (Up to 8G, 1333/1600MHz)

**Graphics:** Intel® HD Graphics 4400

**LAN Chipset:** 2 x Realtek RTL8111E Gigabit LAN

**Audio:** Realtek ALC662 HD Audio

### Power interface

**Power Adapter:** 12 V - 3 A

**DC Jack:** 5.5mm, 2,5 mm

### Environmental Characteristics

**Operating Temp:** 0°C~50°C

**Non-Operating Temp:** -20°C~80°C

**Humidity:** 10%~90%

### Physical Characteristics

**Material:** Aluminum

**Dimensions:** 155 x 127 x 48mm

**Weight:** 1kg

**Mounting:** VESA type anchor

**Cooling:** Forced ventilation free design



# IP Paging System

Local and Cloud



**Discover our comprehensive IP Paging system, designed to simplify the remote broadcast of messages. It can operate on both a local network and in the cloud.**



**Operating the speakers is straightforward with our system, and you can easily integrate your company's software by sending HTTP commands.**



**Issue alerts triggered by sensors, events, or processes managed by your software by sending commands that our speakers will interpret.**



**ARGENTINA**  
Tel: +54 11 5272 9500 · Chile 111 esq. Méjico  
Vicente López · Buenos Aires · B1603CMC

**ISRAEL**  
Tel: +972 538 262 492

**MÉXICO**  
Tel: +52 477 239 5261

**URUGUAY**  
Tel: +598 99 200 210

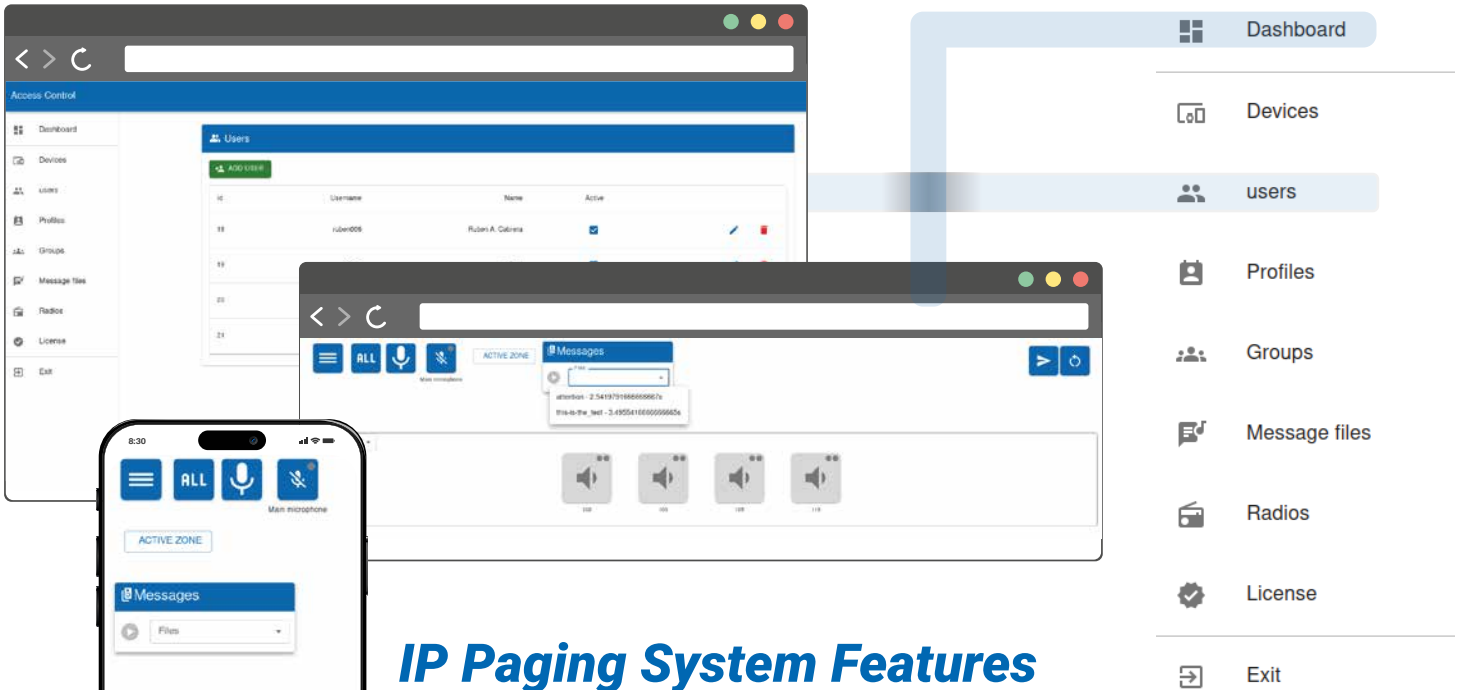


<https://surix.net>

in



*Our multi-user system allows you to configure different profiles and access zones. You can broadcast live voice, music, and pre-recorded messages, as well as select individual speakers or speaker groups with real-time remote sound monitoring.*



## IP Paging System Features

*Whether from the cloud or from a local Wi-Fi network, you can now send messages from a smartphone, this is ideal for staff who make rounds of the facilities, requesting people and/or staff in a certain area, issuing early alerts, or calling attention to plant personnel before an event.*

- Integrate your software and automate messages using HTTP commands
- Local and/or cloud server
- Issue Alert notices for sensors, events, or processes managed by your software.
- Broadcast Voice, Music, Pre-recorded Messages
- Broadcast from:
  - IP console
  - Tablet / Cellphone
  - PC/Mac
  - API Events
  - Events time

- Multi user
- Allows you to discriminate privileges and voice zones
- Speaker selection individually or in groups in real time.
- Sound emission status indicator.
- Verify that the message arrived in real time.
- IP Speaker Line
- Support high definition speakers.

*Search for people private monitoring prevention and emergencies public paging, commercial paging and Industry paging.*

*In addition to our IP paging server, we have our line of IP speakers and cornets that will cover all your needs. We also market our technology in PCBs so you can integrate them into projects or digitize analog systems.*

*We have high-definition IP speakers for both indoor and outdoor use, as well as IP horns to cover large areas such as sports fields or parking lots.*



## IP SIP Voice Console

- You can operate independently without a PC or Mobile phone, you do not need a monitor.
- Individual calls or selection of speaker groups.
- RJ45 PoE+ Network Connection
- ALL button for case of emergency.
- Differentiated CALL and ALL buttons.
- External microphone input.
- 2W speaker for 2-way intercom.
- Pre-recorded evacuation message
- Optional audio input for background music.

*In addition to our IP paging server, we offer our line of IP speakers to meet all your needs. We also market our technology on PCBs for integration into projects or the digitization of analog systems.*

### Indoor Speaker SXC001-10

Load rating standard: 10W  
Max Load (optional) 15W (to 24V 1.5A - PoE)  
Frequency range: 70Hz-20KHz  
SPL(@1W/m): 88dB  
Dimension WxHxL: ø235(166) mm  
Material: ABS  
Color: White

Recommended use: Interior recessed in ceilings.



### Indoor Speaker SXW001-10

Load rating standard: 10W  
Max Load (optional) 15W (to 24V 1.5A - PoE)  
Frequency range: 110Hz-20KHz  
SPL(@1W/m): 92dB  
Dimension WxHxL: 260x180x122 mm  
Material: ABS  
Color: White

Recommended use: Indoors on wall.



### Functionalities

- GUI English, Spanish & Portuguese
- SIP 2.0 (2 accounts)
- Registers as extension of IP PBX or works standalone with Direct IP Address calls
- Unicast and Multicast
- Pre-recorded messages
- Access control standalone or client-server
- HTTP / MQTT total control REST AP
- QR decoding
- Echo cancellation
- VPN remote management for critical applications

### Protocols

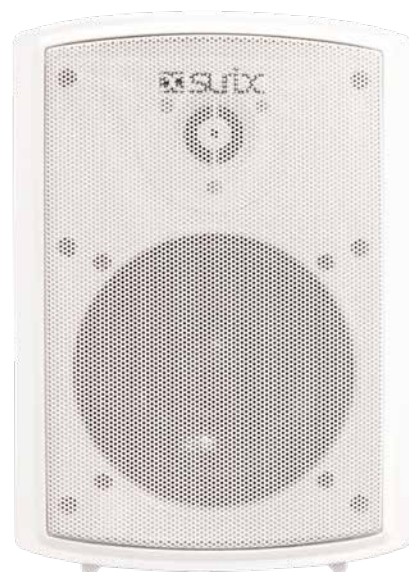
- TCIP/IP
- SIP
- G.711 / G.722 / G.729
- Bluetooth (Optional)
- MySQL
- HTTP
- RTSP
- RTP
- FTTP
- Syslog
- SNTP
- SNMP
- DHCP



## Outdoor and indoor speaker SXWE02-20

Load rating: 20W (to 24V 1.5A - PoE)  
Frequency range: 75Hz-20KHz  
SPL(@1W/m): 89dB  
Dimension WxHxL: 250x176x143 mm  
Material: PP  
Color: White

Recommended use: Interior or  
Exterior on walls or placed in columns.



## Outdoor and indoor horn SXWE02-20

Load rating: 20W  
Input impedance: 500-670K-1K-2K-3.3K-10K ohms  
Frequency range: 350Hz-5KHz  
Output power: 20-15-10-5-3-1W  
SPL(@1W/m): 107dB  
Dimension WxHxL: 205x283x256 mm  
Horn material: ABS  
Horn flat material: Die-cast Aluminium  
Cover material: ABS



### Functionalities

- GUI English, Spanish & Portuguese
- SIP 2.0 (2 accounts)
- Registrates as extension of IP PBX or works standalone with Direct IP Address calls
- Unicast and Multicast
- Prerecorded messages
- Access control standalone or client-server
- HTTP / MQTT total control REST AP
- QR decoding
- Echo cancellation
- VPN remote management for critical applications

### Protocols

TCIP/IP  
SIP  
G.711 / G.722 / G.729  
Bluetooth (Optional)  
MySQL  
HTTP  
RTSP  
RTP  
FTTP  
Syslog  
SNTP  
SNMP  
DHCP







**These outdoor horn speakers provide great performance in even the harshest environments.**

**The straight, ultra-high-power speakers deliver highly articulated sound in noisy areas or large gatherings of people.**

**It is combined with our Paging PCBs and the latest CA20A4 PCB that can drive up to 4 speakers / horns simultaneously.**

### Main features:

- The entire construction of the horn speaker series has the maximum protection grade, IP66.
- The 2-pole connection cable (flexible cable line) is LED through a waterproof PG screw joint.
- The 6-step impedance can be changed with a screwdriver on the back of the unit.



**CA19**  
**IPAC 20**



**CA20A4**



## Hardware:

	IPAC20	CA19	CA20A4	CA88
Dimensions	100 x 85 mm	100 x 85 mm	100 x 110 mm	100 x 110 mm
Voltage	12 Vdc / PoE	12 Vdc / PoE	12 Vdc / PoE	12-24 Vdc / PoE
Ethernet	1	2	1	1
Door Relays	2	2	1	8
Inputs	2	2	2	8
Keypad	YES	YES	NO	NO
External LED	3	3	NO	NO
Card Readers	3	3	1	NO
Speaker	30w	30 W	30w X4	30w
Mic	1	1	1	1
Battery Charge Sensor				YES

## Functionalities:

GUI	English, Spanish, Portuguese
Full IP SIP	yes
IP PBX and Direct IP	yes
Unicast and Multicast	yes
Prerecorded messages	yes
Access control standalone or client-server	Both of them
Notify / HTTP for relays	no
QR decoding	yes
Echo Cancellation	yes
SIP Accounts	3 optional
VPN	yes
Full API RESFUL	yes

## Protocols:

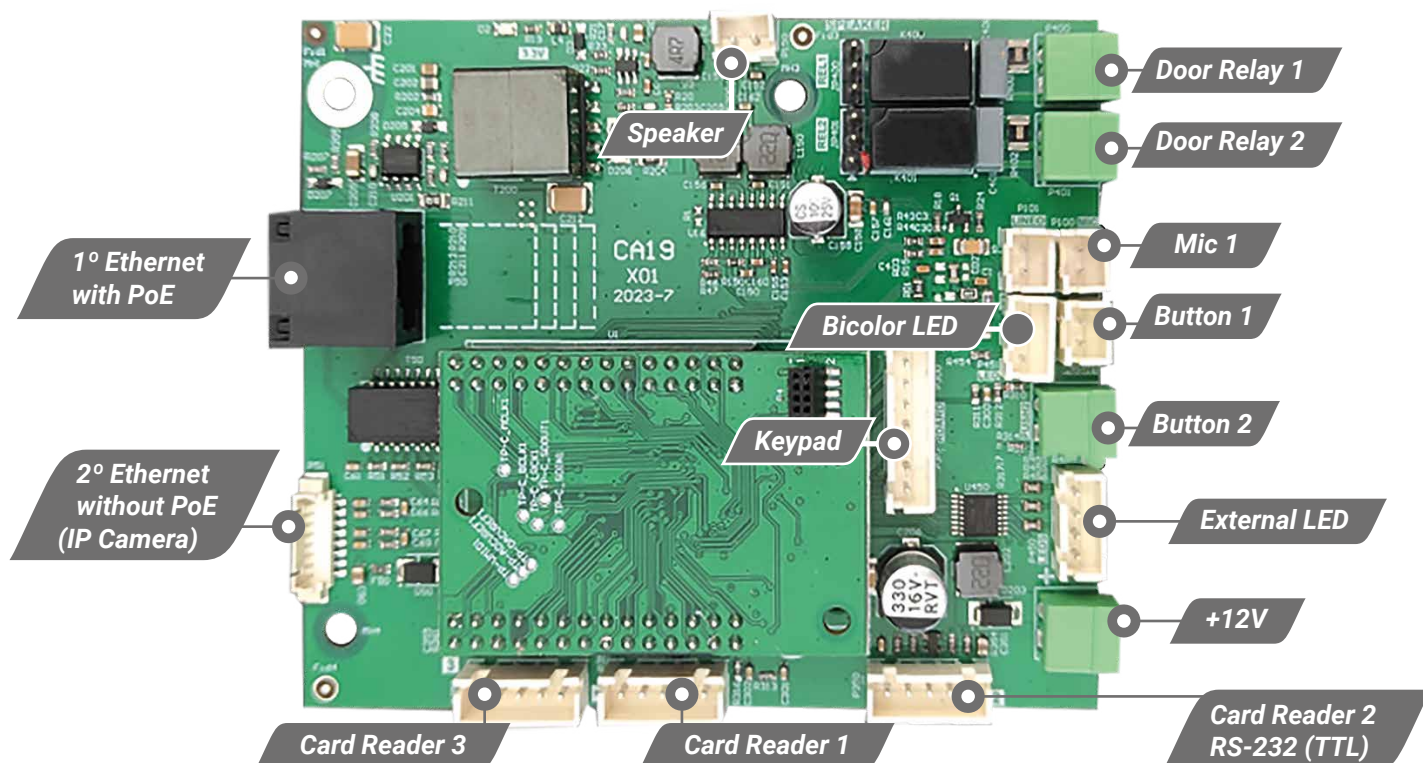
TCIP/IP - SIP - G.711 / G.722 /G.729 - Bluetooth (Optional) - BLE  
MySQL - HTTP - RTSP - RTP - FTTP - Syslog - SNMP- DHCP

## General applications:

Door Phone - SOS Highway Emergency Intercom - Parking Intercom  
Elevator Emergency Intercom - Trucks entrance  
Noisy environments Intercom - Speakers for Public Addressing  
Evacuation - Access control (pin dialing and or proximity card)

## Specific applications:

CA88 was made for specific security integrations that need to link a large number of devices.



## Hardware

### Features

- Dimensions 100 x 85 mm
- 12Vdc
- 2 Ethernet ports (one PoE)
- 2 Relays configurable NO/NC
- 2 configurable push buttons input (or sensors)
- Keypad
- 3 External LED for signaling
- 3 Wiegand interfaces (or RS-232 TTL)
- Speaker (low impedance) **up to 30W**
- Line out (high impedance)
- Mic
- Status LED (software controlled)
- Power on LED

## Software

### Functionalities

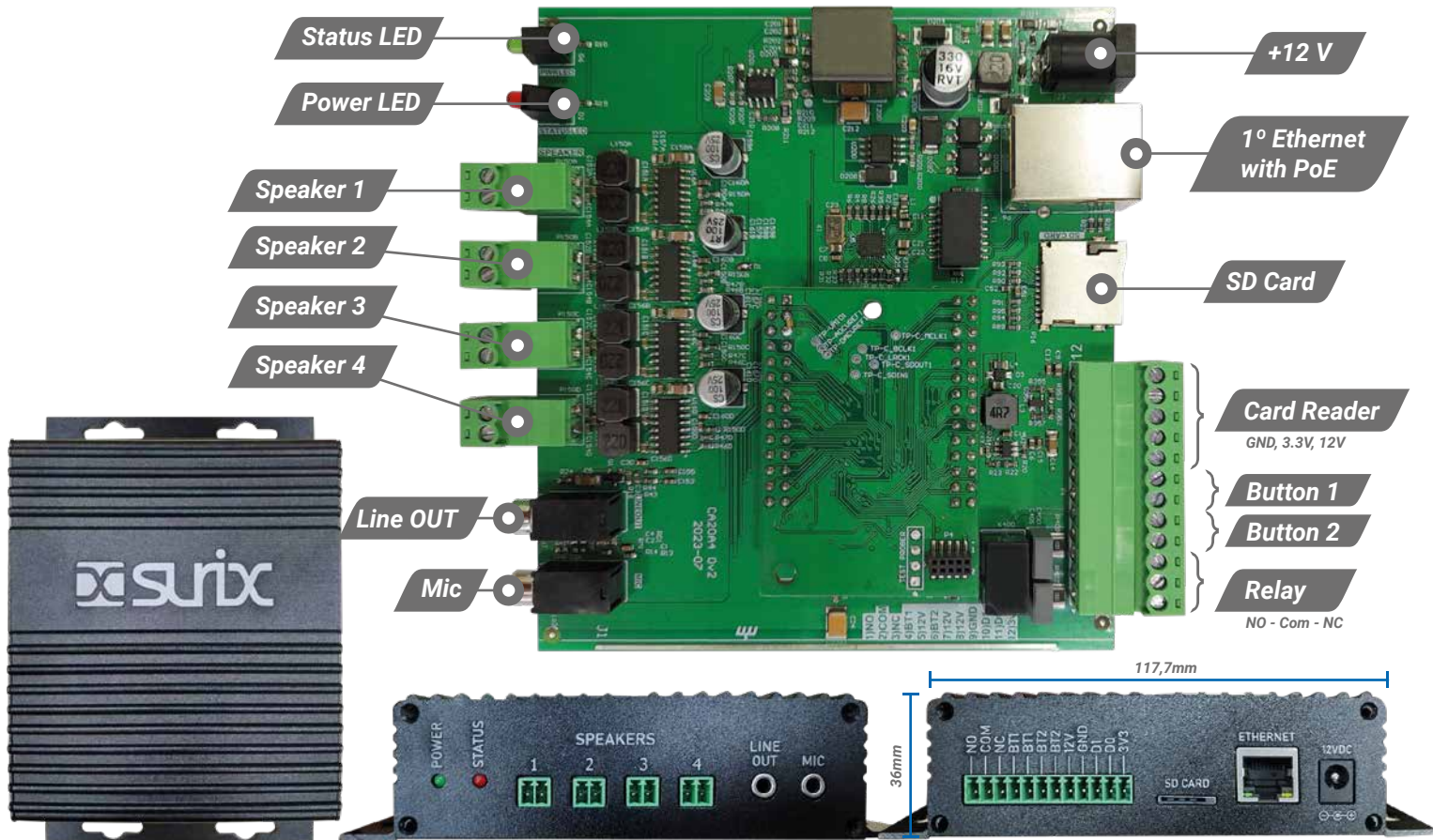
- GUI English, Spanish & Portuguese
- SIP 2.0 (2 accounts)
- Registrates as extension of IP PBX or works standalone with Direct IP Address calls
- Unicast and Multicast
- Prerecorded messages
- Access control standalone or client-server
- HTTP / MQTT total control REST AP
- QR decoding
- Echo cancellation
- VPN remote management for critical applications

### Protocols

- TCIP/IP
- SIP
- G.711 / G.722 / G.729
- Bluetooth (Optional)
- MySQL
- HTTP
- RTSP
- RTP
- FTTP
- Syslog
- SNTP
- SNMP
- DHCP

## Suggested Applications

Door Phone - SOS HighWay Emergency Intercom - Parking Intercom Elevator Emergency Intercom  
Trucks entrance - Noisy environments Intercom - Speakers for Public Addressing  
Evacuation - Access control (pin dialing and or proximity card)



### Hardware

#### Features

- Dimensions 100 x 110 mm (PCB)
- 12Vdc
- 1 Ethernet port PoE
- 1 Relays configurable NO/NC
- 1 push buttons input (or sensor)
- 1 SD CARD slot
- Up to 4 Speaker (low impedance) up to 30W (X4)
- Line out (high impedance)
- Mic
- Proximity Card Reader (Wiegand interface 125 KHz)
- Status LED (software controlled)
- Power on LED

### Software

#### Functionalities

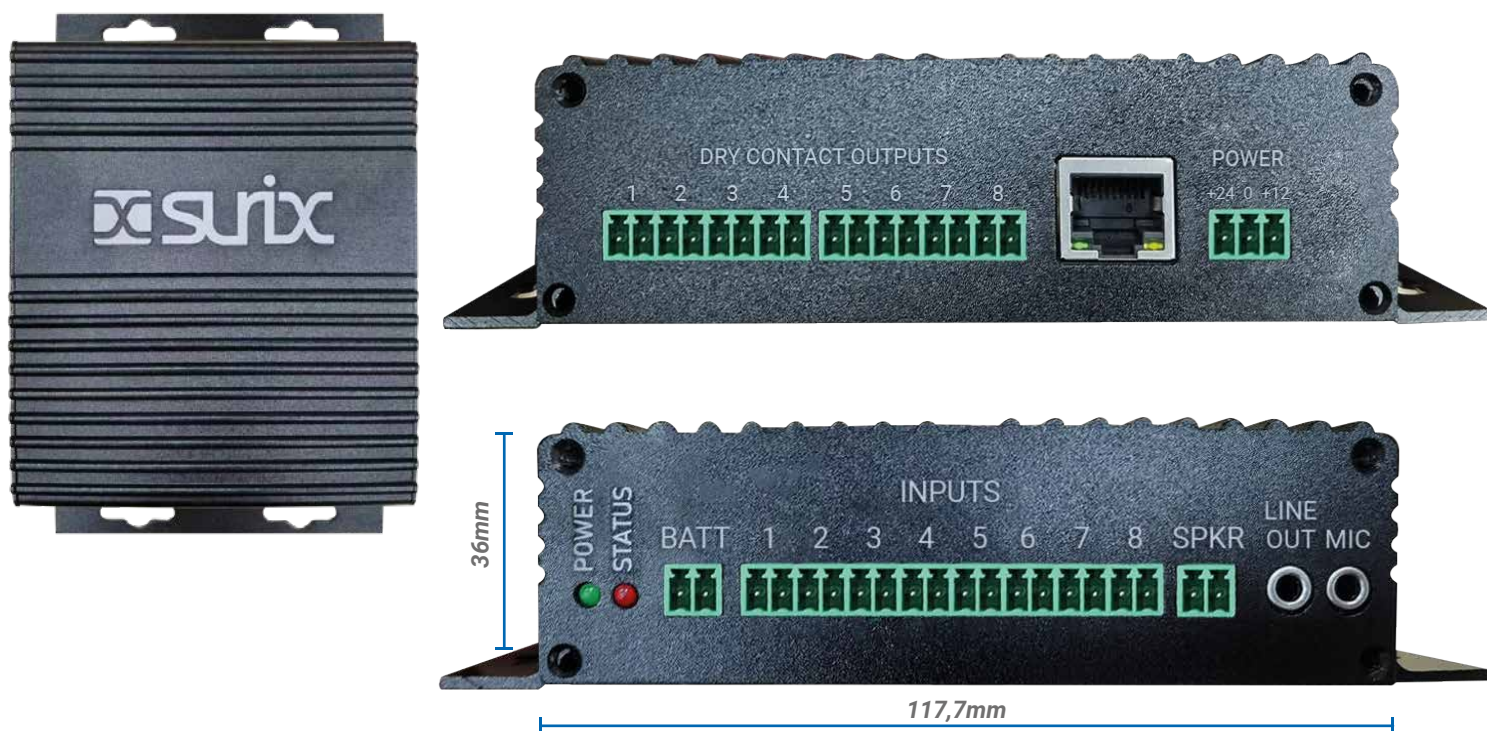
- GUI English, Spanish & Portuguese
- SIP 2.0 (2 accounts)
- Registrates as extension of IP PBX or works standalone with Direct IP Address calls
- Unicast and Multicast
- Prerecorded messages
- Access control standalone or client-server
- HTTP / MQTT total control REST AP
- QR decoding
- Echo cancellation
- VPN remote management for critical applications

#### Protocols

- TCIP/IP
- SIP
- G.711 / G.722 / G.729
- Bluetooth (Optional)
- MySQL
- HTTP
- RTSP
- RTP
- FTTP
- Syslog
- SNTP
- SNMP
- DHCP

### Suggested Applications

Door Phone - SOS Highway Emergency Intercom - Parking Intercom Elevator Emergency Intercom  
 Trucks entrance - Noisy environments Intercom - Speakers for Public Addressing  
 Evacuation - Access control (proximity card)



### Hardware

#### Features

- Dimensions: 100 x 110 mm (PCB)
- Power: PoE / 12~24 Vdc
- 1 Ethernet port
- 8 Dry Contact relays NO/NC
- 8 Input (buttons)
- Battery charge sensor
- Speaker (low impedance output 30 W)
- Line out (high impedance)
- Microphone input
- Status LED (software controlled)
- Power on LED

### Software

#### Functionalities

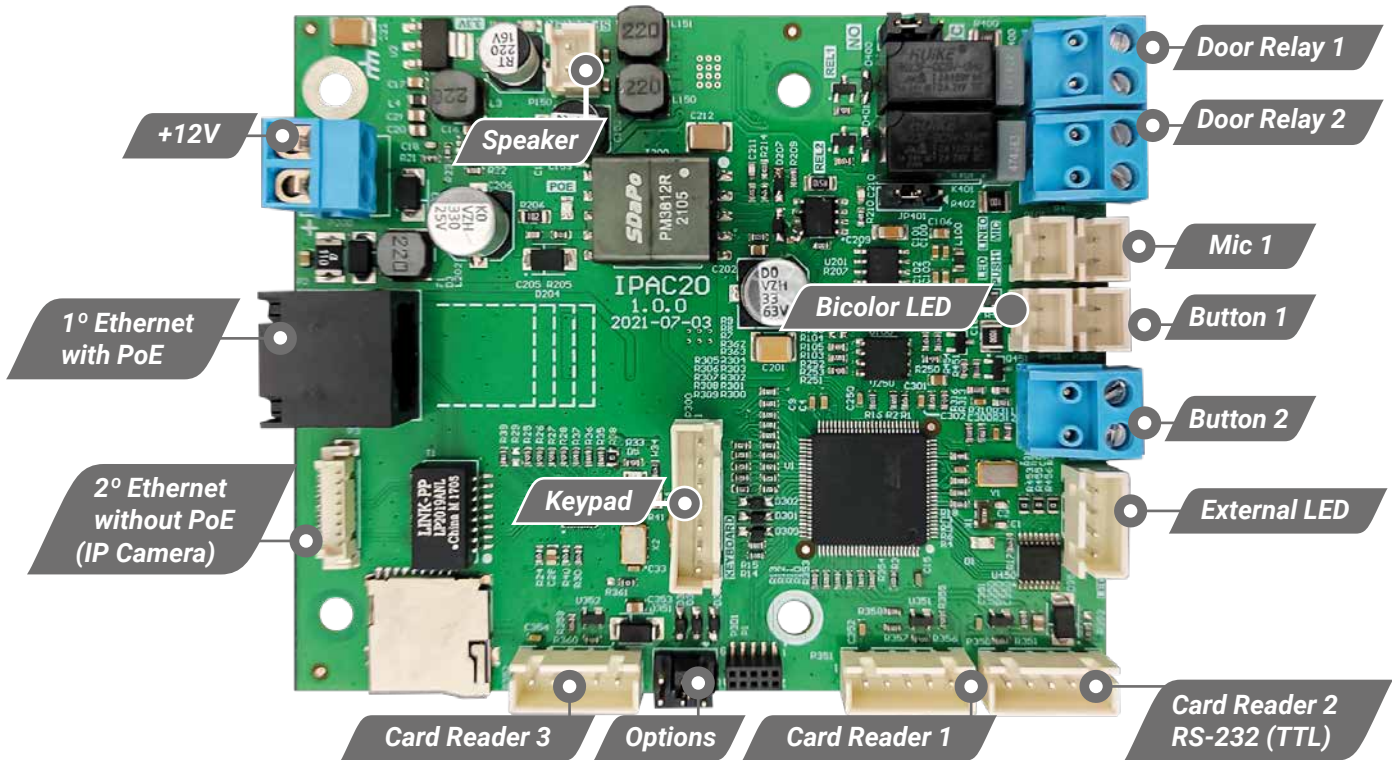
- GUI English, Spanish & Portuguese
- SIP 2.0 (2 accounts)
- Registrates as extension of IP PBX or works standalone with Direct IP Address calls
- Unicast and Multicast
- Prerecorded messages
- Access control standalone or client-server
- HTTP / MQTT total control REST AP
- QR decoding
- Echo cancellation
- VPN remote management for critical applications

#### Protocols

- TCIP/IP
- SIP
- G.711 / G.722 / G.729
- Bluetooth (Optional)
- MySQL
- HTTP
- RTSP
- RTP
- FTTP
- Syslog
- SNTP
- SNMP
- DHCP

### Suggested Applications

This PCB is aimed at security applications, where a wide variety of devices such as alarms, motion sensors, lights, sirens can be connected remotely, as well as controlling doors. It also retains the characteristics of other PCBs for intercom integrations, public announcements and evacuation.



## Hardware Software

### Features

- Dimensions 100 x 85 mm
- 12Vdc
- 2 Ethernet ports
- 2 Relays configurable NO/NC
- 2 to 8 configurable push buttons input (or sensors)
- Telephone 3x4 Keypad
- 3 External LED for signaling
- 3 Wiegand interfaces (or RS-232 TTL)
- Speaker (low impedance) **up to 30W**
- Line out (high impedance)
- Mic
- Status LED (software controlled)
- Power on LED

### Functionalities

- GUI English, Spanish & Portuguese
- SIP 2.0 (2 accounts)
- Registrates as extension of IP PBX or works standalone with Direct IP Address calls
- Unicast and Multicast
- Pre-recorded messages
- Access control standalone or client-server
- HTTP / MQTT total control REST AP
- QR decoding
- Echo cancellation
- VPN remote management for critical applications

### Protocols

- TCIP/IP
- SIP
- G.711 / G.722 / G.729
- Bluetooth (Optional)
- MySQL
- HTTP
- RTSP
- RTP
- FTTP
- Syslog
- SNTP
- SNMP
- DHCP

## Suggested Applications

Door Phone - SOS Highway Emergency Intercom - Parking Intercom Elevator Emergency Intercom  
Trucks entrance - Noisy environments Intercom - Speakers for Public Addressing  
Evacuation - Access control (pin dialing and or proximity card)